

2003



*TRAVEL TRAILERS
FIFTH WHEELS
SCOUTS
LITES*



Note: Some items shown are optional.

SKYLINE[®]

BRINGING AMERICA HOME. BRINGING AMERICA FUN.



Model #3230
Tan/Chestnut

Nomad Standards

After a day of rafting, climbing or wildlife watching, you may be ready for a little civilization, or at least a comfortable place to wash off the dirt, cook a good meal and just kick back. To the uninitiated, returning from a day of outdoor action to the relaxed, hospitable surroundings presented in the Nomad line of travel trailers and fifth wheels may seem a contradiction in terms. But talk to Nomad owners, and they'll tell you why it makes perfect sense to have a hot shower and comfortable bed even when you're in the middle of the wilds.



2 Year Full Warranty
Not a limited warranty. Total coverage for your recreational vehicle.

SKYLINE

BRINGING AMERICA HOME. BRINGING AMERICA FUN.



Model #3230
Tan/Chestnut

DARE TO COMPARE



other

Underwriters Laboratories Classification

2-Year Full Warranty

***Individually Weighed — Certified — Posted
on Exterior***

Rain Tunnel Tested

Simulated Road Tested (Shake Simulator)

***Top-Quality Mortise & Tenon Cabinet Door
Construction (No Angle Cuts)***

***Stile & Rail Cabinet Construction on Upper &
Lower Cabinets***

***Seamless One-Piece Roof with Manufacturer's
12-Year Limited Warranty***

High-Gloss Painted Exterior Color Band

***Double-Wrapped & Sealed Exterior Metal
Corners***

Radius Clamp-Ring Windows

Radius Sealed Outside Compartment Doors

5/8" Plywood Tongue & Groove Floor

Fully-Welded Entry Door Steps & Outriggers

***Welded LP Bottle Rack (No Nuts & Bolts to
Loosen)***

11,500 lb. Rated Safety Chain

Cambered Chassis

R7 Insulation

Larger-Capacity Holding Tanks

Upgraded Name Brand Appliances

Over 51 Years in Business



SKYLINE®

BRINGING AMERICA HOME. BRINGING AMERICA FUN.



*Scout Model #275
Sage/Oak*



*Scout Model #275
Sage/Oak*



*Scout Model #308
Mauve/Oak*

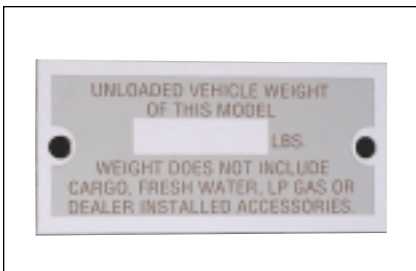


*Scout Model #308
Mauve/Oak*



Nomad S

*Whatever your passion — taking to the water for a big
lunker in the lake, or ascending a steep mountain trail,
a Scout fifth wheel or travel trailer is the perfect companion for the
outdoors. Think of it as a well-appointed mobile home that fits
a whim and a lifestyle that can change in an instant. Whether your
outings are family events, Nomad has the space and amenities to meet
individual needs, including space to store your gear.*



Actual Weights,

Not Estimated Weights

For your safety and peace of mind, Skyline weighs every recreational vehicle at the factory. Other manufacturers use estimated weights which can be in error by as much as 20 percent. Insist your recreational vehicle includes an actual weight next to the entry door.

Underwriters Laboratories Classification and Inspection

Exceeds RVIA inspection requirements. RVs can only be UL Classified, not UL "Recognized." No references to UL can be made until UL specifically authorizes an RV manufacturer to use the blue UL Label.



Double-Wrapped and Sealed Corners with Rubber Insert Molding

Overlapped metal provides watertight design. Tape and molding application.

What You See Is What You Get...

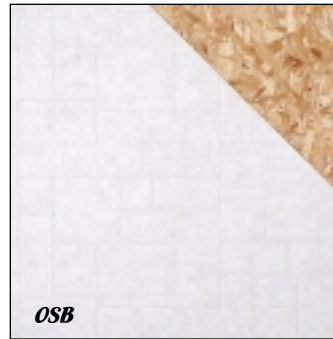
Don't be fooled by the others. With Skyline, you can count on quality, brand name components:

Dometic® refrigerators, air conditioners, and awnings.

Wedgewood® three-burner, high-output ranges with ovens.

HydroFlame® furnaces.

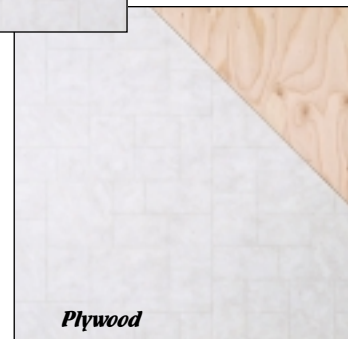
Dewald Hydra-Sync hydraulic slide-out rooms.



OSB

Tongue and Groove Plywood Floor

Stronger than Oriented Strand Board (OSB). Plywood is a highly stable panel when exposed to moisture or high humidity. Other manufacturers slip customers OSB — the very same floor they spoke against for decades.



Plywood

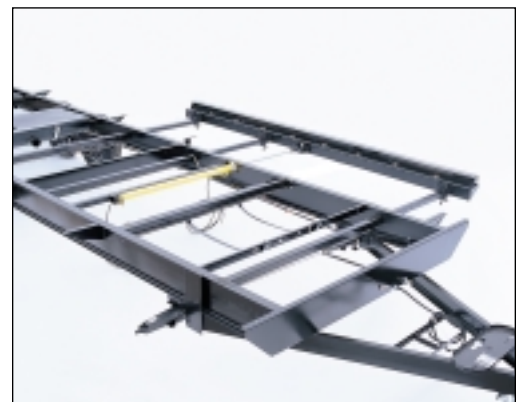


Scouts

...the greens, hooking the biggest straight-up rock wall — a Nomad the smart way to go in the great mounted cabin that you can move on ge with your mood. And if your s amenities to accommodate stow everyone's outdoor gear.

Durable, One-Piece Rubber Roof

12-year manufacturer's limited warranty. U.V. ray resistant. Provides complete, watertight seal.



Hydraulic Slide-Out Rooms with Manual Override

Superior to electric. Smooth, quiet, and quick. Most dependable system on the market today.



All Nomad units are tested for 15 minutes in a high-pressure shower spray to guarantee that they are watertight.



A shake-simulator test is performed for 10 minutes to detect any problems before leaving the factory.

Nomad Quality

The quality of the design and craftsmanship that goes into your Nomad is simply unmatched in the industry. Our designers, engineers and production experts use superior materials and state-of-the-art production techniques to build RVs that offer years of dependable performance. Skyline even works with Underwriters Laboratories to help assure stringent quality control standards. We are the only RV manufacturer in the world whose vehicles are UL classified. Your Nomad is also covered by an outstanding two-year full warranty backed by a nationwide service program second to none. Solid quality, matchless value, outstanding appearance. It pays off down the road.

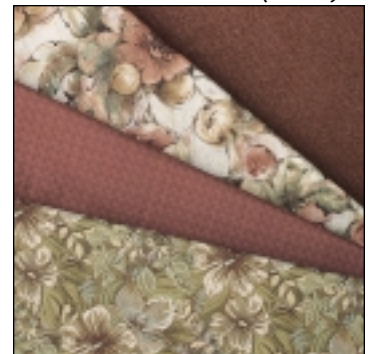
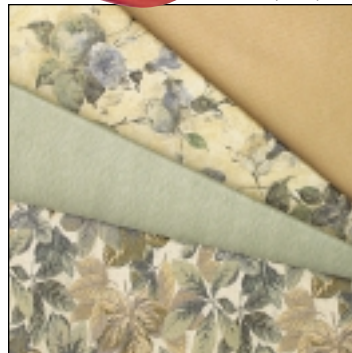
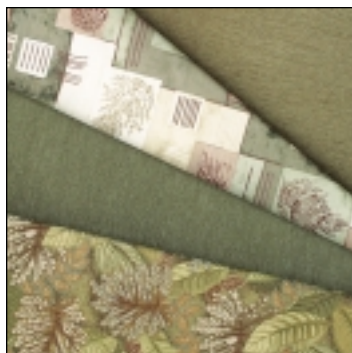


Molten Boysenberry (Mauve)

Elmhurst Slate (Blue)

Mali Boysenberry (Sage)

Longwood Lagoon (Tan)



Tailor your Nomad to suit your taste from a choice of attractive interiors.



Skyline Customer Satisfaction

Skyline customer satisfaction is more than just a promise. We believe you deserve equality in every aspect of ownership. To ensure your continued satisfaction, we're dedicated to providing you with a quality product along with the very best service available in our industry. Skyline's "Commitment of Excellence" will be a source of pride and satisfaction for you.

Contact your Skyline Dealer for details.



Member
RVIA
RECREATION VEHICLE
INDUSTRY ASSOCIATION

Go RVing
Life's A Trip™

Your local Nomad dealer is:

SKYLINE®

BRINGING AMERICA HOME. BRINGING AMERICA FUN.

For the name of your nearest Nomad Dealer, call:
Hemet, CA 1-888-442-0997 • McMinnville, OR 1-800-929-1080
Leola, PA 1-800-693-6207 • Mansfield, TX 1-800-962-7773
Elkhart, IN 1-800-736-2573

or visit us at our Web site at www.skylinecorp.com

Skyline is concerned with customer safety. That's why we rely on the added inspection of Underwriters Laboratories.



All Skyline RVs are UL Classified as conforming to ANSI A119.2.

Manufacturer's Notice: All specifications, equipment, and prices are subject to change without prior notice. Production of all models subject to seasonal scheduling. Skyline Corporation reserves the right to improve models without incorporating these changes in similar models produced at an earlier date.

Consult your automobile dealer and your recreational vehicle dealer to assure the proper match between tow vehicle and recreational unit. Tow vehicle and recreational unit must be properly equalized for efficient product performance and safety. Before you purchase your recreational vehicle, carefully consider the number of people it will accommodate and its end use. Manufacturer's load capacity restrictions and recommendations must be followed for safe and efficient product performance.

©Skyline Corporation, 08/02, Printed in the U.S.A.